

#01 POLYRACKTECH-GROUP

SPACE

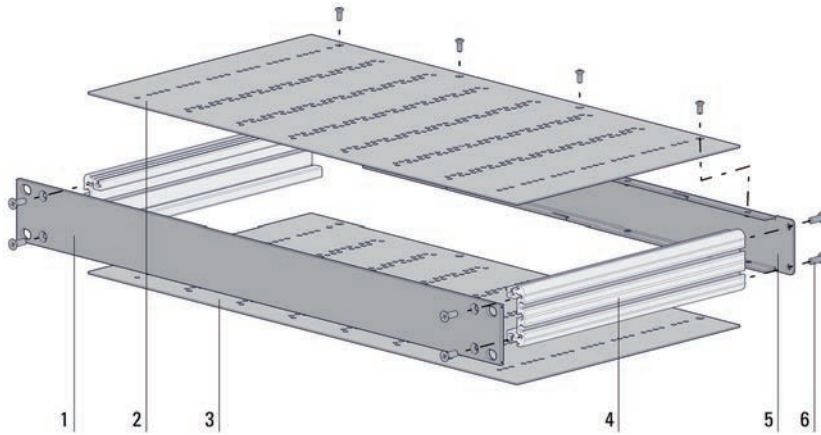
// Product information



//02 19" RACKMOUNT/DESKTOP CASES FOR PLUG-IN UNITS

Space

// Product information

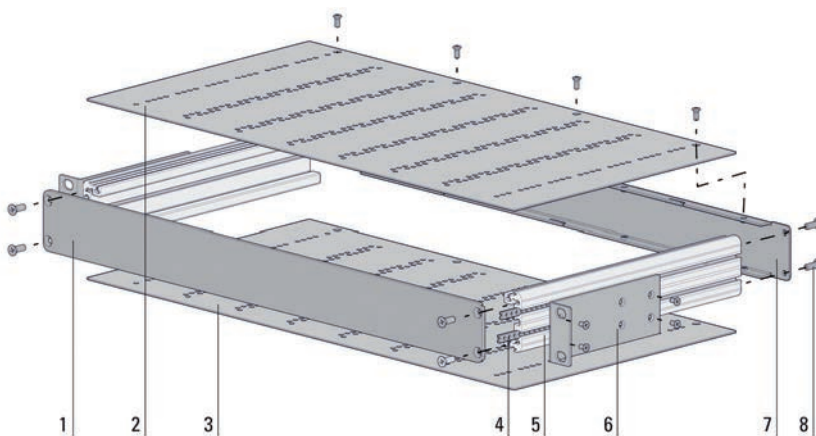


Configuration examples

The diagram shows the configuration of a 19" Space Series type A rackmount case

- 1 Front panel
- 2 Top/bottom cover* perforated (option of non-perforated)
- 3 Top/bottom cover* perforated (option of non-perforated or chassis plate)
- 4 Side extrusion
- 5 Rear panel
- 6 Assembly hardware

Parts marked with * are not included in the scope of delivery of the basic unit, i. e. must be ordered separately.



The diagram shows the configuration of a 19" Space Series type B rackmount case

- 1 Front panel
- 2 Top/bottom cover* perforated (option of non-perforated)
- 3 Top/bottom cover* perforated (option of non-perforated or chassis plate)
- 4 Threaded inserts*
- 5 Side extrusion
- 6 19" mounting bracket
- 7 Rear panel*
- 8 Assembly hardware

Parts marked with * are not included in the scope of delivery of the basic unit, i. e. must be ordered separately.

Surface finishing

- Alodined
- Front panel: front anodized/rear alodined

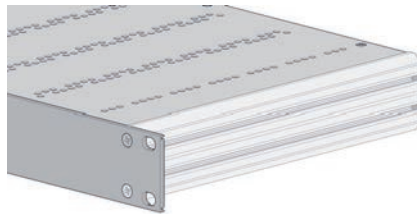
//02 19" RACKMOUNT/DESKTOP CASES FOR PLUG-IN UNITS Space

// Basic units

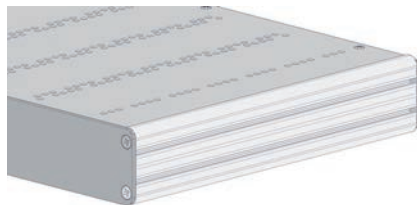
Basic units

With the Space Series you have a choice between two basic units. "Type A" cases are used as 19" Rackmount cases, "Type B" cases are used as desktop cases.

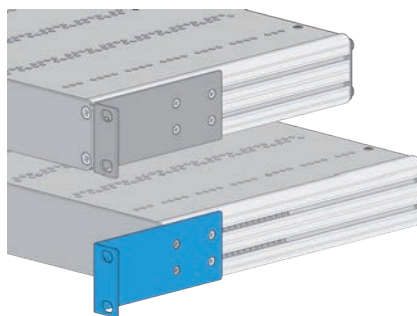
Features of the basic units



Type A with 19" front panel



Type B



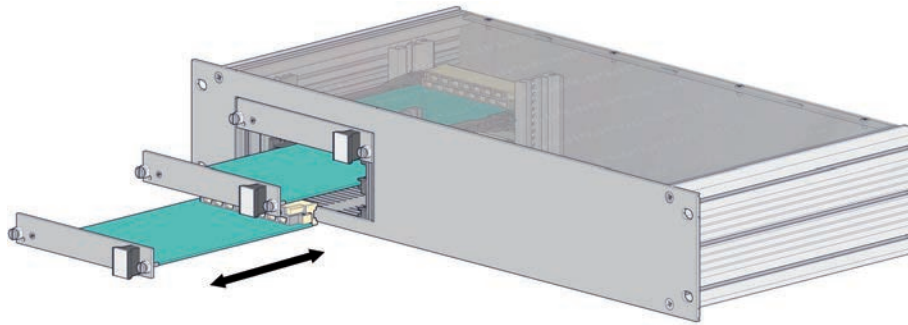
Type B with 19" mounting brackets (optional)

Appropriate positioning of the 19" mounting brackets enables recessed mounting to a depth of up to 60 mm.

//02 19" RACKMOUNT/DESKTOP CASES FOR PLUG-IN UNITS

Space

// Single components



Horizontal PCB mount

Product information

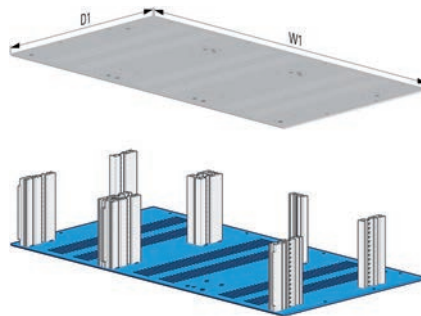
For horizontal PCB mount of single and/or double Eurocards in 1 U and 2 U Space Series cases.

Standards

Mounting dimensions in accordance with IEC 60297-3-101

Note

– Front panels for horizontal PCB mount on request



Chassis plate for horizontal PCB mount – Space

Chassis plates are used to assemble the conversion kits required for horizontal PCB mount. They replace the bottom covers.

Material

Aluminum 2 mm, alodined

$$W1 = W + 1.9 \text{ mm}$$

$$D1 = D + 2 \text{ mm}$$

Dimension

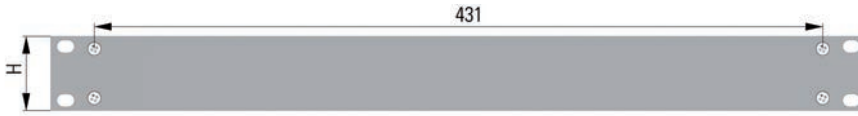
W
84 HP

//02 19" RACKMOUNT/DESKTOP CASES FOR PLUG-IN UNITS

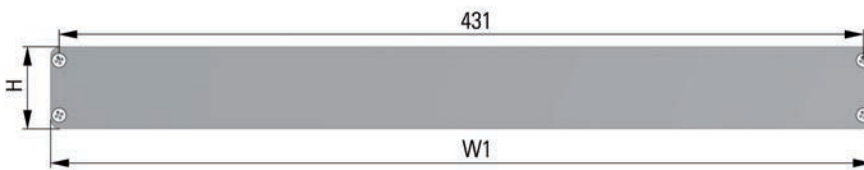
Space

// Product information

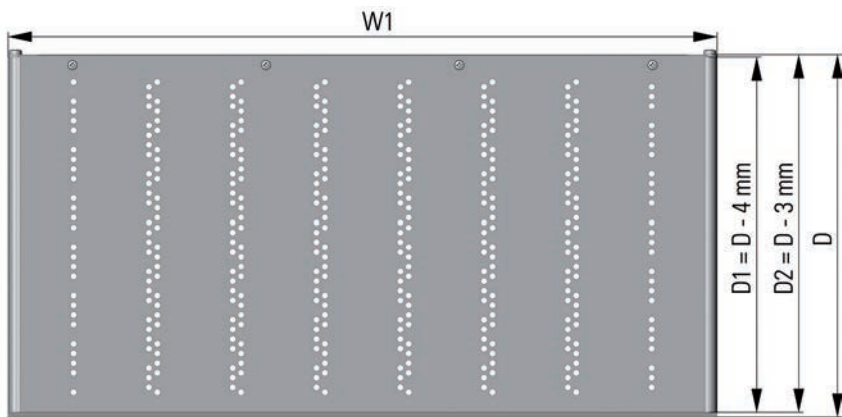
Dimension diagrams



Front view, type A



Front view, type B



Top view (type A and B)

- D = overall depth
- D1 = usable internal dimension
- D2 = mounting depth in 19" rack when 19" mounting brackets are used (optional)

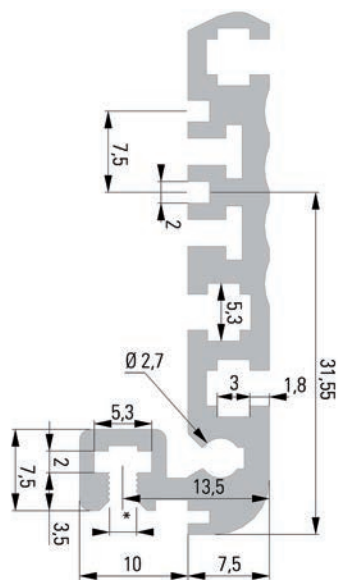


Side view with top/bottom cover

//02 19" RACKMOUNT/DESKTOP CASES FOR PLUG-IN UNITS

Space

// Product information

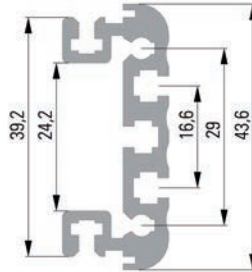


Side extrusions 1 U, 2 U, 3 U

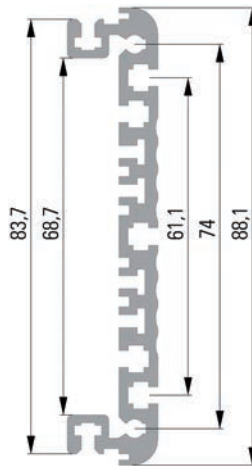
* M3 thread
(Maximum tightening torque 0.75 Nm)

//02 19" RACKMOUNT/DESKTOP CASES FOR PLUG-IN UNITS Space

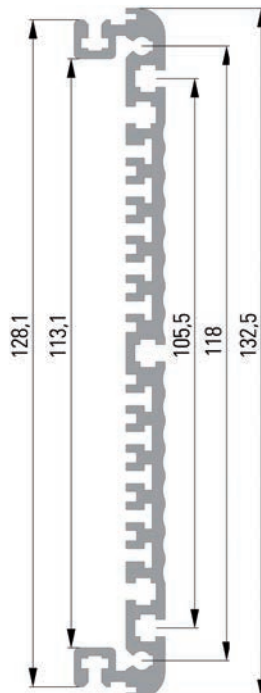
// Product information



Side extrusion 1 U



Side extrusion 2 U

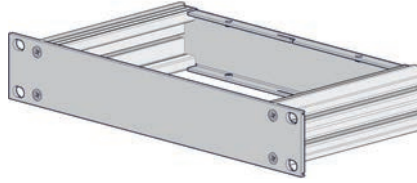


Seitenwandprofil 3 HE

//02 19" RACKMOUNT/DESKTOP CASES FOR PLUG-IN UNITS

Space

// Basic units



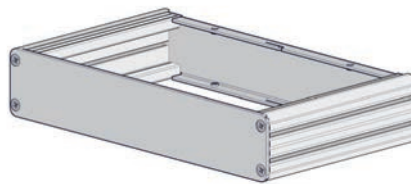
Space case, type A

Scope of delivery

Side extrusion	2 pcs
19" front panel	1 pc
Rear panel	1 pc
Assembly kit	1 pc

Dimension

H	W	H in mm	W1 in mm
1 U	84 HP	43.6	440
2 U	84 HP	88.1	440
3 U	84 HP	132.5	440



Space case, type A

Scope of delivery

Side extrusion	2 pcs
Front panel	1 pc
Rear panel	1 pc
Assembly kit	1 pc

Dimensions

H	W	H in mm	W1 in mm
1 U	84 HP	43.6	440
2 U	84 HP	88.1	440
3 U	84 HP	132.5	440